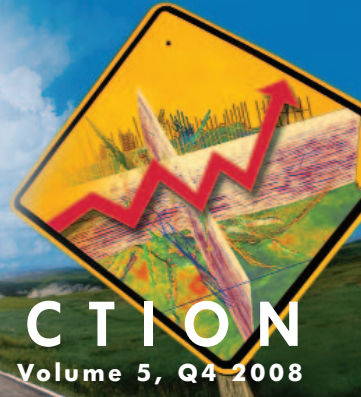




# OpenSpirit®

## CONNECTION

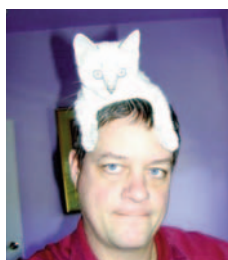
Volume 5, Q4 2008



### FEATURE STORY

## A Workflow Full House

By Dan Piette, OpenSpirit President & CEO



We recently returned from the SEG, which was held last month in Las Vegas. Like many of you, I was concerned about how any exhibiting company would be able to hold the attention of the SEG

delegates – after all, we were competing with the bright lights and Black Jack tables in Sin City.

Adding to the uncertainty, coincident with the SEG was an economic downturn that continues to have a global impact. Would the oil companies save Q4 cash by sending fewer people to the show? What burning issues would the delegates be focused on?

Then, as a final insult, air traffic was in such chaos that one third of our OpenSpirit team, including myself, was either stuck in Houston or routed so far off of the beaten path that some of us didn't even arrive at the SEG opening until the \$9 glasses of wine were literally being drained from the bottom of the barrel.

Despite all the drama, I was pleasantly surprised that attendees were plentiful, attentive and still focused on how workflows and collaboration can be used to make the most of their infrastructure, regardless of the economic climate.

### Workflows for Today

By design, it is the job of OpenSpirit to enable the workflows E&P users can apply to their everyday tasks. Best-of-breed geoscience application providers are working with OpenSpirit to provide this level of flexibility to end users through the synergy of their applications and the OpenSpirit integration platform. Oil companies are leveraging multiple data store connectivity, application-to-application data sharing or a combination of both.

Last quarter, we announced the release of the OpenWorks® R5000 data connector. Now you can now take advantage of the great things about of R5000, and by using OpenSpirit, expand your reach to best-of-breed applications and data stores in your shop.

Similarly, Paradigm and Schlumberger Information Solutions (SIS) are expanding clients' user-defined workflow possibilities by using OpenSpirit to reach out to their EPOS™ and Ocean® industry frameworks, further enhancing the end users' data and application sharing environments. Data and application sharing workflows will get another boost with the next generation Ocean-Petrel® Application Adapter and the upcoming EPOS-Geolog™ data connector.

OpenSpirit is the application and data exchange broker for the myriad of E&P workflows required by the asset team. Below is a short list of practical workflows that can be put to use in your infrastructure today.

- **Petro-technical workflows** such as earth modeling, petrophysical analysis, seismic interpretation and rock physics. Data can be consumed by these applications individually or, even better, floated across applications to execute a user-defined scenario of choice. Rapid scenario analysis has never been so easy.
- **Spatial workflows** to provide the asset team with easy ways to create 2D and 3D maps, whether the goal is locating lease boundaries, targeting nearby facility infrastructure, highlighting offset well locations, or positioning a drilling location at the right place on the globe.
- **Data browsing and data management workflows** to accelerate finding, viewing and sharing of data among data stores and applications, whether from your desktop, E&P portal environments, or both.

continued on page 3

### FEATURE STORY

## A Workflow Full House

LoadIT Real-Time Drilling Workflows

SHORT SHOTS  
OpenSpirit News

FastTech 50 Award

New OpenSpirit Partners



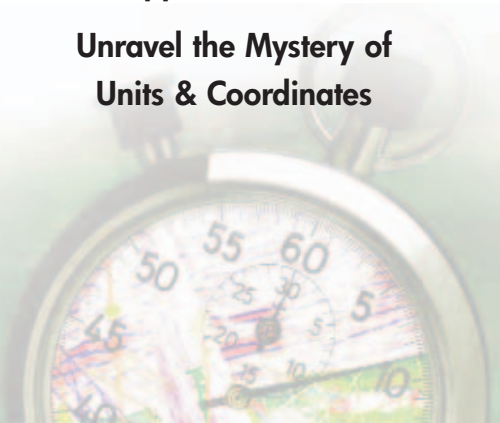
### Infinite Integration

Digital Pathways Delivered

Achieve Exponential Efficiency

Break Free from  
Application Bias

Unravel the Mystery of  
Units & Coordinates



# OpenSpirit Real-Time Drilling Workflows

*LoadIT™ WITSML and OpenSpirit – the first end-to-end, source-to-destination and vendor-independent environment for transfer of real-time data to the destination project data store of your choice.*

LoadIT WITSML is a data transfer utility from OpenSpirit that enables real-time data access and data transfer of critical well data from multiple WITSML server sources to any OpenSpirit-enabled data store.

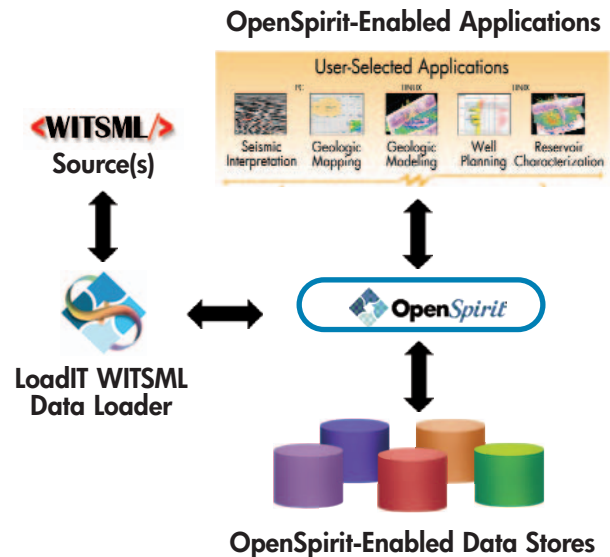
For the first time, geoscientists, engineers and asset teams can have easy access to real-time drilling data directly from their existing OpenSpirit integration environment.

## E&P End Users

- Automate the data transfer process from WITSML server source to destination project data store – save time and reduce risk by eliminating time-consuming and error-prone import/export processes
- Convert unit, coordinate, and attribute values on the fly based on the requirements of the destination project data store
- Access a robust set of WITSML data types, including well headers, log curves and directional surveys
- Create a “virtual” operations decision center from your desktop – well data comes to you in a format your applications can use; work within your existing geoscience environment
- Drive better drilling decisions in near real time, while optimizing both your well and your drilling spend
- Promote rig-to-office collaboration across the life of the project

*“Recognizing, in right time, a deviation in the actual versus expected reservoir marker depth, allowed us to adjust the well’s starting core point depth. This ensured both the successful acquisition of the core and appropriate allocation of drilling dollars to the collection of the required well data.”*

– E&P Company Geologist



## OpenSpirit Business Partners

- Take advantage of right-time access to real-time data via your OpenSpirit-enabled applications. If you have read/write data access today, your application is already real-time enabled and ready to access data directly from any OpenSpirit-enabled data store.
- Expand your real-time drilling operations workflows to include the full reservoir. OpenSpirit-enabled applications, such as petrophysical analysis and 3D earth modeling tools, use the same data as the field, driving collaborative decisions that consider both the well and total reservoir knowledge.

## Take Right-Time Connectivity to the Entire Asset Team

Give your asset teams access to the WITSML data they need to make timely decisions. Rig-to-office collaboration has never been easier! ♦

## LoadIT WITSML Features

- Enables discrete, real-time data transfer, or continuous data streaming, based on the criticality of the drilling phase
- Supports multiple WITSML sources, including Schlumberger Information Solutions (SIS) InterACT, Sperry INSITE Anywhere, Kongsberg SiteCom, Petrolink, Wellstorm and more
- Leverages SIS Osprey Connect SDK libraries to access multi-vendor WITSML server sources
- Supports the following data types:

### OpenSpirit Objects

- Wells
- Wellbores (including deviation surveys)
- Well logs

### WITSML Objects

- Wells
- Wellbores
- Logs
- Trajectories
- TrajectoryStation

- **Drilling and production workflow support** by enabling real-time application access to well, log and trajectory data, or natively accessing production volumes located within corporate data stores.
- **Bridging information environments post merger** so application connectivity can be realized independent of the inherited data stores. Project teams can proactively begin to work together, without a long wait to re-engineer the data environment.

Ultimately, the final workflow design is only a matter of user choice.

### Sharing a Vision with Partners

Mixed portfolios are the order of the day in oil companies – by choice, by region, by merger/acquisition, by any number of good reasons. During the SEG, announcements were made about four new or enhanced partner relationships.

- **Perigon Solutions** has added OpenSpirit integration to its iPoint Visualization System, so end users can get the best possible view of the wellbore.
- **DataFlux** is using OpenSpirit as the interoperability layer to allow better collaboration among multivendor applications and data stores while improving data analysis and quality via their DataFlux Enterprise Integration Server.
- **TerraSpark Geosciences** will be adding OpenSpirit connectivity to their Insight Earth 3D visualization and interpretation solution.
- Strengthening our existing partnership, **Intervera Data Solutions** is integrating the latest version of OpenSpirit with their DataVera Monitor module.

We're pretty proud of these relationships because it demonstrates in a concrete way that the vision of best-of-breed workflows using OpenSpirit is becoming a reality in the market.

### What I Learned in Vegas

The odds are with the house. Never draw to an inside straight. And no matter what the price per barrel, oil companies still need to realize extraordinary value from their geoscience environment by integrating the tools that they use most.

Collectively, OpenSpirit and the companies mentioned above, as well as Landmark, SIS, and more than 40 other geoscience providers, are working to provide oil companies access to the right data at the right time, enabling key workflows that help E&P project teams successful.

OpenSpirit is your answer to multi-vendor application and data interoperability – you can bet on it. ♦

**Gambling with your infrastructure?**

Integration isn't just about data anymore. In your high-stakes world, you have multiple anchor applications, specialty tools and different data sources that must play well together to be truly valuable.

OpenSpirit provides the connectivity that drives cross-discipline collaboration, so you can bring together the geoscience applications you need, when you need them.

**Improve your odds with OpenSpirit!**

**OpenSpirit**  
www.openspirit.com



## SHORT SHOTS OpenSpirit News

### v3.1.2 SP1 is Available

The OpenSpirit v3.1.2 SP1 installation kits are available for Linux and Solaris platforms.

You can download the v3.1.2 SP1 installation kits at:

<http://www.openspirit.com/downloads.html>

User Name/Password: openspirit/osplvwle

If you have questions, please contact us and we'll be happy to assist you.

### Events and Technical Symposia

- SMI E&P Information and Data Management Conference, London, February 10-11, 2009
- ESRI PUG, Houston, February 23-25, 2009
- EAGE, Amsterdam, June 8-11, 2009
- OpenSpirit Technical Symposium, Amsterdam, June 12, 2009
- SEG, Houston, October 25-28, 2009

### OpenSpirit Training Dates

#### OpenSpirit Basics

- February 24, 2009
- May 26, 2009
- August 25, 2009
- December 1, 2009

#### OpenSpirit for Administrators

- February 25, 2009
- May 27, 2009
- August 26, 2009
- December 2, 2009

For more information and to register:  
[www.openspirit.com/training.html](http://www.openspirit.com/training.html)

## OpenSpirit Earns FastTech 50 Slot



OpenSpirit has once again been recognized by the *Houston Business Journal* as one of the top 50 technology companies in the Houston area based on outstanding annual percentage revenue growth.

Ranked at number 43, this is OpenSpirit's fourth appearance on the Houston FastTech 50 list. ♦



# OpenSpirit Partners Provide Options and Opportunities

Partners are a key element of OpenSpirit's business. Working collaboratively, we can accomplish better results – faster – to deliver unprecedented integration possibilities to the industry. In November, we welcomed three new members of the OpenSpirit partner family, and in the case of Intervera, strengthened a relationship that began in 2005.



Building on its promise to provide geoscientists with instant access to data, Perigon Solutions used the new OpenSpirit software developer kit to enable its iPoint™ Visualization System to access well data from any OpenSpirit-enabled data store and share interaction events among appli-

cations. Version 2008.7 of iPoint was released September 1, 2008, and is already being adopted by oil company clients.

"Geoscientists should be evaluating, not searching for, subsurface data. Streamlined user workflows that allow access to data regardless of location, is vital," said Grant Monaghan, Managing Director of Perigon Solutions. "OpenSpirit provides the application interoperability and data store connectivity layer, allowing us to focus on the best wellbore co-visualization science for our clients, and get commercial solutions to them quickly."

See press release at [www.openspirit.com](http://www.openspirit.com).

DataFlux, a leading provider of data quality and data integration solutions, will integrate OpenSpirit technology into its award-winning



software to provide increased compatibility with third-party geosciences applications and data stores. End users will be able to extract well data from OpenSpirit-enabled data stores to perform rapid data analysis and quality control tasks utilizing the DataFlux® Enterprise Integration Server and business rules monitoring. The data can then be leveraged in a variety of petro-technical workflows.

"For the upstream oil industry, data accuracy and efficiency mean better decisions," said Tony Fisher, President and CEO of DataFlux.

"DataFlux helps organizations realize immediate value from their data improvement processes, and the addition of the OpenSpirit interoperability layer will allow geoscientists to better collaborate within their multi-vendor application and data store environment."

See press release at [www.openspirit.com](http://www.openspirit.com).

---

*"We provide the connectivity environment that drives cross-discipline collaboration and unparalleled data access, enabling our partners to focus on the critical and ever-evolving science that supports their applications. It is gratifying to know that application providers from across the E&P lifecycle see the value of incorporating the OpenSpirit interoperability framework into their respective solutions."*

*– Dan Piette, President & CEO, OpenSpirit*

---



TerraSpark Geosciences is developing an application adapter using the OpenSpirit software developer kit (SDK),

which will connect the company's Insight Earth solution to the OpenSpirit-integration platform. The Insight Earth™ solution will be able to reach out to any OpenSpirit-enabled data store to access data and share interaction events among applications.

"By adding OpenSpirit connectivity to Insight Earth, we are making it easier to move data in and out of Insight Earth, which enables geoscientists to leverage the best-of-breed technologies that TerraSpark offers," said Geoffrey Dorn, PhD., President of TerraSpark Geosciences. "Additionally, this new offering will give our customers a way to augment their multi-vendor workflows through the seamless fit of Insight Earth technology and workflows into their existing environment."

See press release at [www.openspirit.com](http://www.openspirit.com).

Intervera Data Solutions is integrating OpenSpirit's latest version 3.x integration platform with their upcoming DataVera Monitor™ module as part of DataVera version 8.0.



"OpenSpirit extends our capability to apply data quality solutions interactively as users select and work with their E&P data across applications," said Paul Gregory, President and Managing Partner of Intervera Data Solutions.

For example, E&P data users are able to simultaneously select or copy data through the OpenSpirit framework, broadcast this data to the DataVera application and view data quality metrics within seconds. Users can also select the best quality data from DataVera and broadcast the results via OpenSpirit to other applications.

See press release at [www.openspirit.com](http://www.openspirit.com).

OpenSpirit Connection is a quarterly publication of the OpenSpirit Corporation. It is distributed via email and through the corporate Web site: [www.openspirit.com](http://www.openspirit.com)

If you would like to subscribe to OpenSpirit Connection, please send an email with "subscribe" anywhere in the subject or message body to the email address below.

OpenSpirit Corporation, 4800 Sugar Grove Blvd., Suite 500, Stafford, TX 77477, (281) 295-1400

Address all inquiries and subscriptions to: [info@openspirit.com](mailto:info@openspirit.com)